



ENHANCED BATTLE RIFLE

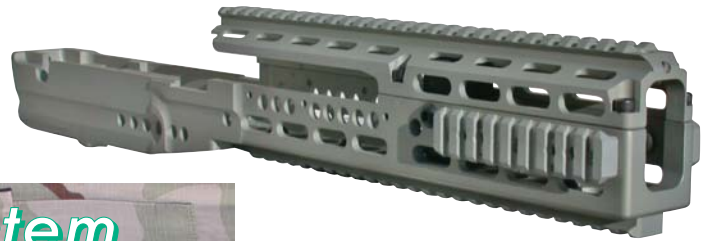
Chassis Stock System



- *Improves Accuracy.*
- *Low Maintenance.*
- *"Drop-in" Conversion.*
- *Multiple Ambidextrous Sling Mounts.*
- *Reduced Felt Recoil.*
- *Multiple Sight Locations.*
- *Tailors Itself To Soldier's Battle Dress.*
- *Increases Operating System Reliability.*



Sage International, Ltd.



Chassis System

- Chassis is precision machined from a solid billet of high strength aircraft grade aluminum.
- Standard M14 and M1A actions are easily installed using existing M14 tools, making the conversion a true “drop-in”.
- Rigidity of the chassis increases accuracy and reliability.



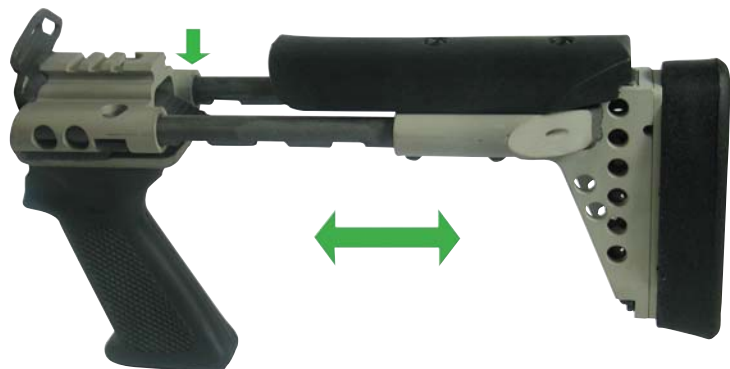
Operating Rod Block



- Precision machined from ordnance grade steel and designed to interface in close tolerance with the aluminum stock chassis.
- Additional stock bedding is eliminated by the op-rod block being joined to the chassis by three 1/4” screws and the standard trigger mechanism.
- Increases reliability and tighter groups.

Collapsible Stock

- Straight line recoil decreases muzzle jump and felt recoil.
- Adjustable length of pull facilitates the use of body armor and stock “fit” for all shooters.
- Full size soft recoil pad.
- 1913 Picatinny rail above the pistol grip is engineered to provide close eye relief for night vision modules.
- Thumb release facilitates fast and easy opening.





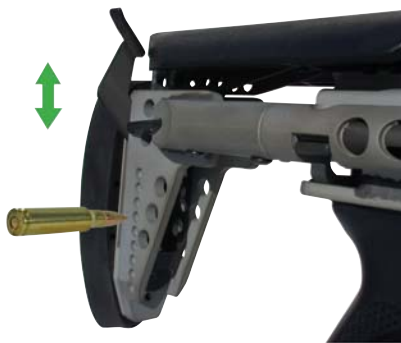
Sling Mounting Points

- All sling mounting points are steel.
- Three ambidextrous 1-1/4" sling slot locations:
 - Movable front plate.
 - Ambidextrous sling position located between the chassis and the collapsible stock, above pistol grip.
 - Rear ambidextrous sling mount at the butt end of the collapsible stock under the cheek rest.



Adjustable Cheek Rest

- Robust glass filled polymer full contour cheek rest.
- 2" vertical adjustment in 1/4" increments.
- The cheek rest is field adjustable, using the tip of a 7.62mm bullet.
- Convenient self stowing tensioning wrench releases cheek rest for adjustment and eliminates cheek rest movement when in its stowed position.



Sighting and Optical Mounting Surfaces

- All mounting surfaces are Mil-Spec 1913 Picatinny Rail.
- Forward mounting surfaces:
 - 3 o'clock and 9 o'clock rail.
 - 6 o'clock rail.
 - 12 o'clock one piece machined top with integral rail.
- Collapsible stock main body-1.75" 1913 rail.
- Auxiliary stripper clip sight base.





Detachable Forearm

- Formed KYDEX® construction.
- Easily removed from stock chassis.
- Built in palm swell.
- Minimizes heat transfer generated by high firing rates.
- Accepts Sage International, Ltd. vertical foregrip when the detachable forearm is mounted.

Optional Accessories

Stripper Clip Sight Base

- Precision machined from ordnance grade steel.
- Replaces existing stripper clip guide.
- Permits in-line mounting of scoped optics.
- Insures that the scope maintains zero.
- Allows clear through access to the ejection port in the event of a jam.
- 1913 Mil-Spec Picatinny Rail pattern.
- Two position sight adjustment.



Vertical Foregrip

- Durable polymer construction.
- Attaches directly into 6 o'clock rail without removing the detachable forearm.
- Five adjustment positions.



Sage International, Ltd.